

Case Study: Ardent House, Aberdeen

099/Sept17



Glazing systems by Kawneer feature on a new office block in Aberdeen

Kawneer's zone-drained AA[®]100 and AA[®]110 curtain wall systems, with 50mm and 65mm sightlines respectively, were complemented by AA[®]720 commercial entrance doors at Ardent House, a 47,000ft² office building in the new emerging central business district of Aberdeen, the North Dee Business Quarter.

Building: Ardent House

Location: Aberdeen

Architect: Halliday Fraser Munro

Main Contractor: Robertson Construction Eastern

Installer: Linn-Tech Scotland

WWW.KAWNEER.CO.UK

 **KAWNEER**
AN ARCONIC COMPANY

Architects are Ardent about Kawneer

Architectural glazing systems by Kawneer were specified for the £10 million Ardent House office building on the banks of the River Dee for a trio of reasons.

Built by Robertson Construction Eastern partly over a road, the project features a four-storey faceted screen supported on cantilevered steel which deflects 22mm under its weight.

The steel had to be pre-deflected by using dead weights which were progressively removed as the weight of the curtain wall was added.

This, and the AA®720 doors used on the ground floor to complement a revolving door and at high level for access to a balcony area, were installed by approved specialist sub-contractor Linn-Tech Scotland.

As well as traditional curtain wall screens, the zone-drained AA®100 and AA®110 were also used for ribbon windows on six of the seven storeys, while the AA®110 system was also used as a barrier when the screens were level with the internal floor of the faceted screen.

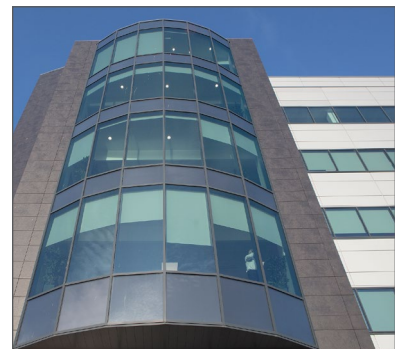
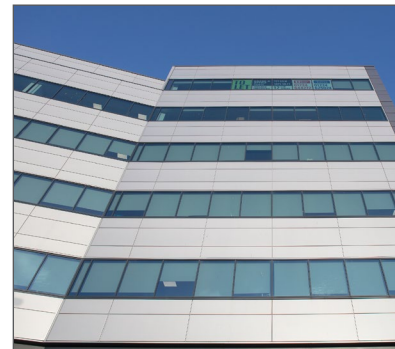
The systems manufactured in Cheshire by Kawneer were specified by regular Kawneer users Halliday Fraser Munro architects for three particular reasons.

Technical director John Scott said the brief had been to provide 47,000ft² of high-quality office accommodation and they met this by specifying "quality products".

He added: "We specified Kawneer because it is a quality product and fitted the project requirements, and aluminium is long-lasting and durable. The curtain wall elements are integral to the design."

The year-long traditional build close to the city centre and in a maturing location was challenging for Robertson and Linn-Tech as part of it was over an existing (Russell) road and it was in close proximity to a building on the western boundary.

Ardent House complements developer Miller Cromdale's existing portfolio in the same business district established by them in conjunction with Aberdeen Harbour Board and Aberdeen City Council.



Please contact our Architectural Services Team if you have a project you would like to discuss: Tel: 01928 502604 / Email: kawneerAST@arconic.com

Kawneer UK Limited, Astmoor Road, Astmoor Industrial Estate, Runcorn, Cheshire WA7 1QQ
Tel: + 44 (0)1928 502500 Fax: + 44 (0)1928 502501

WWW.KAWNEER.CO.UK